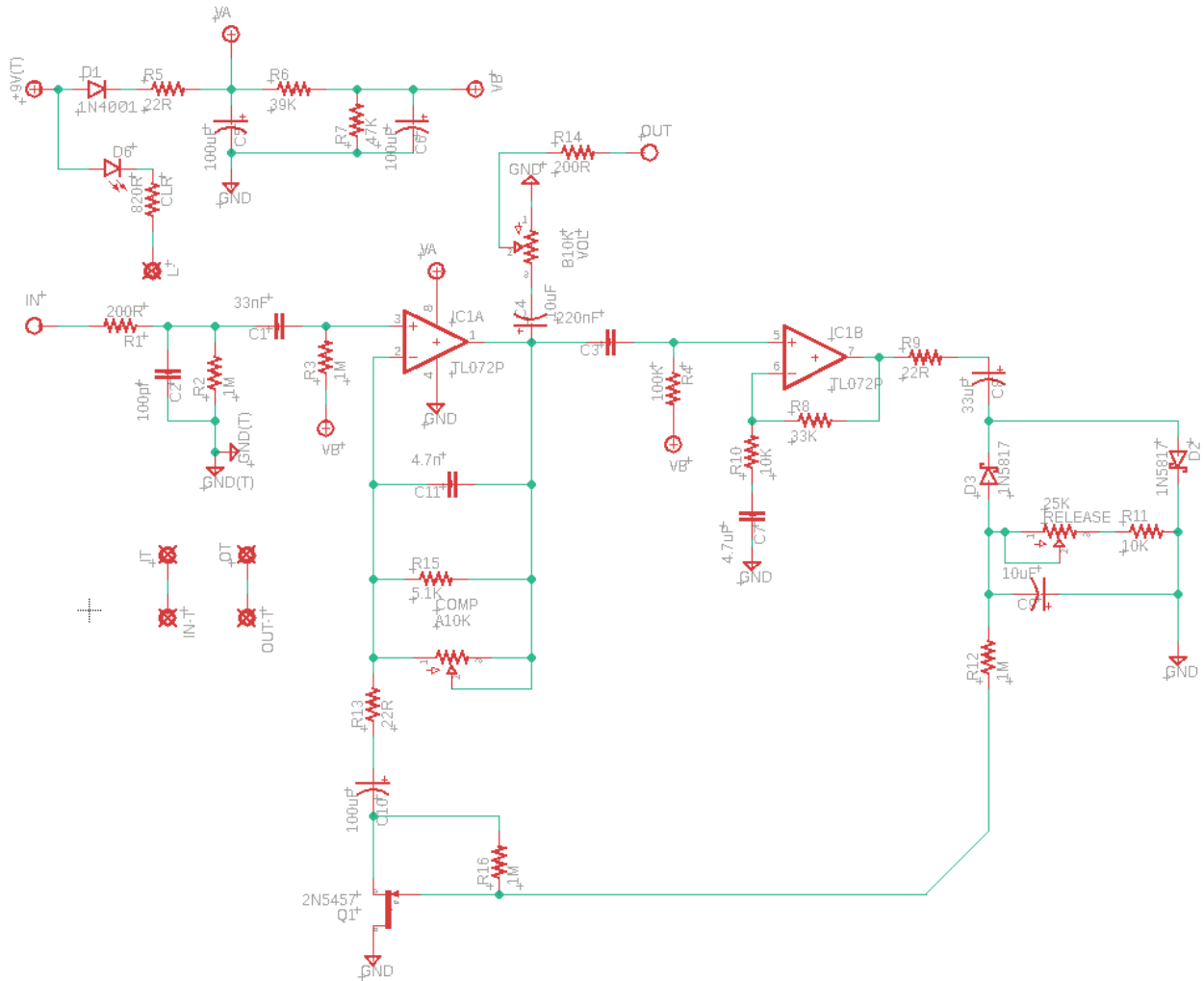
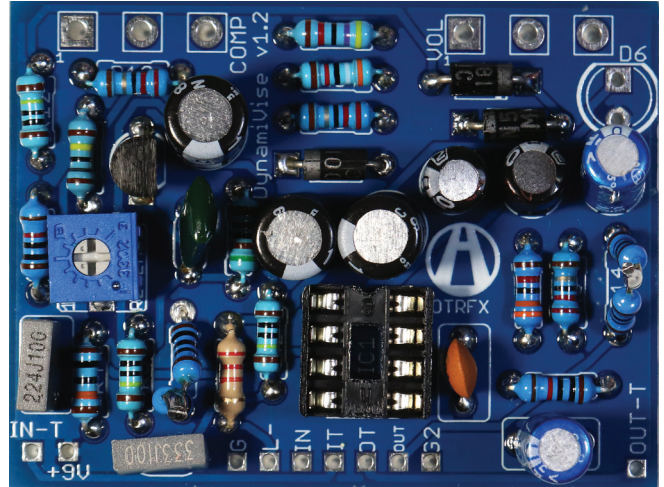
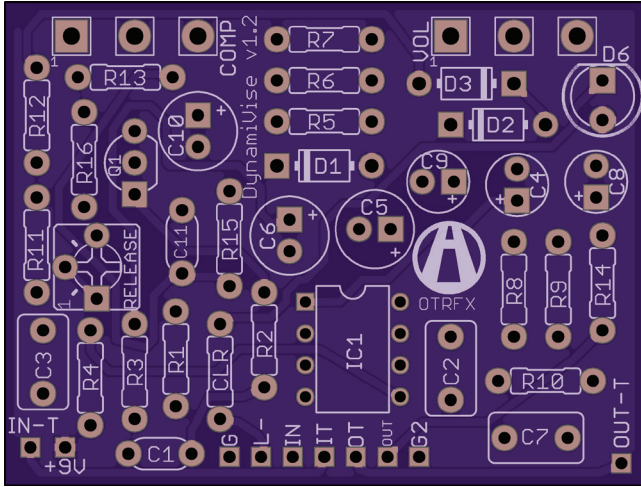




Dynami Vise (v1.2) Build Guide



Dynami Vise (v1.2) Build Guide

The Dynami Vise is a compressor pedal based on the boutique Rothwell Lovesqueeze from the UK. It is a natural, transparent sounding compressor that preserves your tone while boosting the low-level nuances of your playing by up to 20dB. It's very low noise floor won't add extra hum or hiss to your tone, as some other vintage compressor pedal designs do. It's ability to operate at 9v (or up to 18v for more headroom) makes it great for bass as well as guitar. This is the comp that will convert some of the 'I don't like compressors' players.

One enhancement made to the original circuit is the addition of a release control internal trimpot - turning the trimpot clockwise will yield a faster release time.

Resistors

R1	200R
R2	1M
R3	1M
R4	100K
R5	22R
R6	39K
R7	47K
R8	33K
R9	22R
R10	10K
R11	10K
R12	1M
R13	22R
R14	200R
R15	5.1K
R16	1M
R17	CLR*

Capacitors

C1	33nF	Film
C2	100pf	Film
C3	220nF	Film
C4	10uF	Electrolytic
C5	100uF	Electrolytic
C6	100uF	Electrolytic
C7	4.7uF	Film
C8	33uF	Electrolytic
C9	10uF	Electrolytic
C10	100uF	Electrolytic
C11	4.7nF	Film

Potentiometers

VOLUME	B10K	16mm Pot
COMP	A10K	16mm Pot
RELEASE	25K	Trimpot

Diodes

D1	1N4001
D2	1N5817
D3	1N5817
D6	LED

Transistors

Q1	2N5457
----	--------



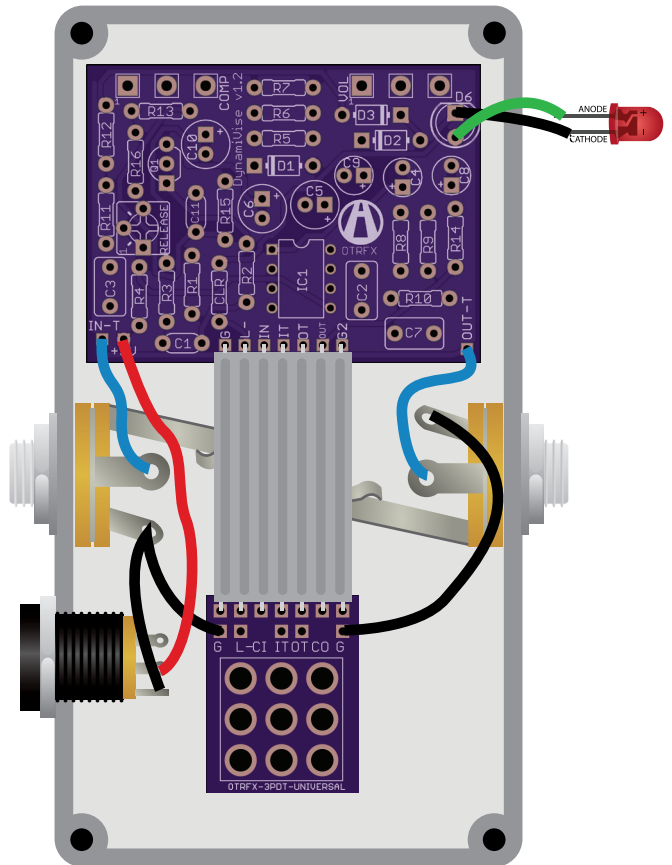
NOTE: There is no D4 or D5. They were eliminated when the release control was added to the circuit.

ICs

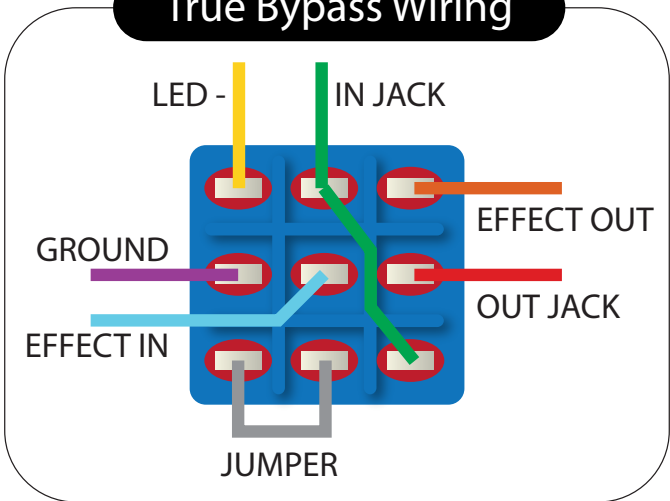
IC1	TL072
-----	-------

* CLR = Current Limiting Resistor for the LED. 1k - 4.7k depending on desired brightness. (lower resistor value = brighter)

Dynami Vise (v1.2) Build Guide



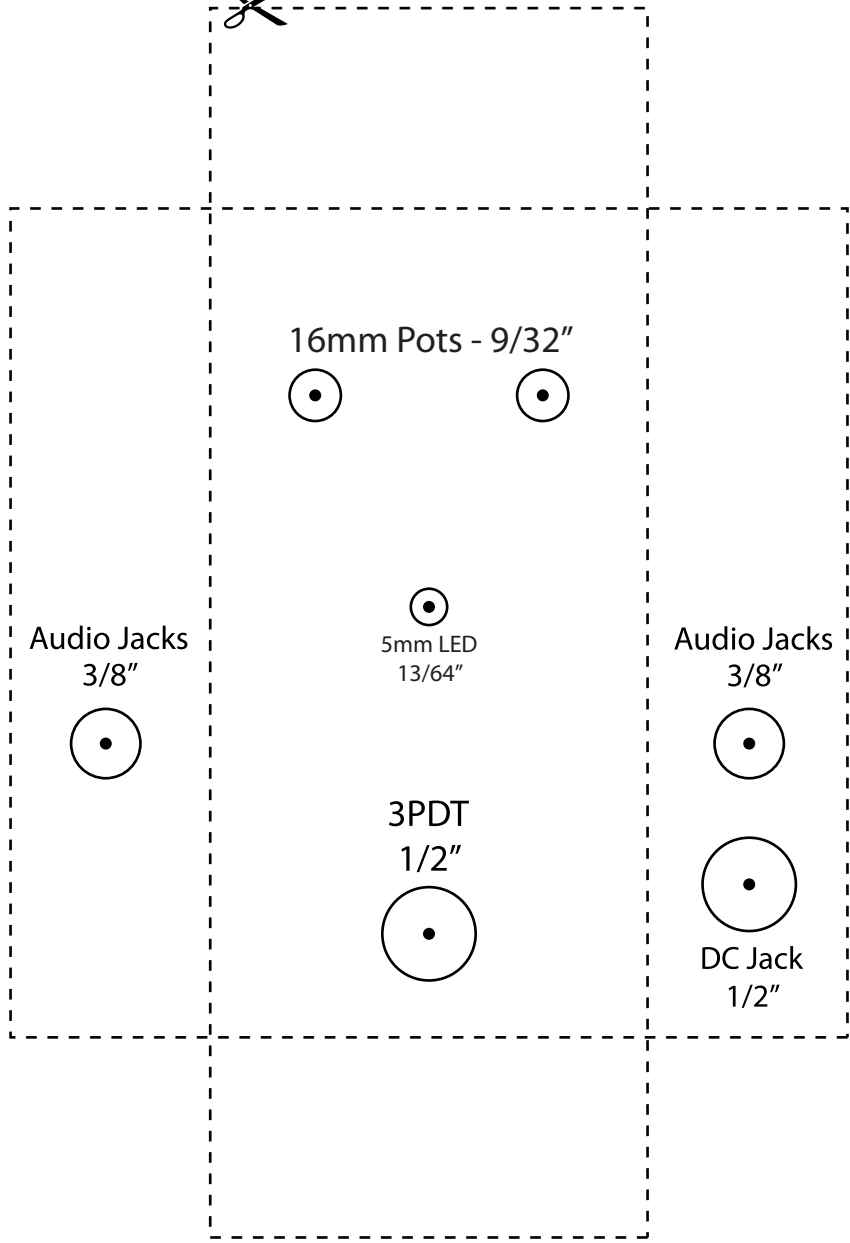
True Bypass Wiring



Dynami Vise (v1.2) Build Guide

Drilling Template

1590B Enclosure



Dynami Vise (v1.2) Build Guide

GENERAL INSTRUCTION STEPS:

Important: do the assembly in the following order to avoid unnecessary hardship!



1. Install/solder all resistors & diodes that lay flat on the PCB.
2. Install/solder any sockets (for IC's, diodes, resistors.. anywhere you might want to change a part, value or type).
3. Install/solder any DIP switches (if any).
4. Install/solder all capacitors & transistors.
5. Install/solder ribbon cable connector and/or any other wiring on the PCB which go to the jacks/stomp switch.
6. Install/solder PCB mounted pots & LED
(Important: use *pot dust caps* or *some other non-conductive material* to keep back of pots from touching the back of the pcb)
7. Attach/solder wiring to the jacks & stomp switch.

TIPS:

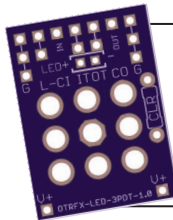
- Check to make sure your wiring is complete before firing up the pedal for the first time, especially the 9V & ground wiring.
- Snip your component leads short after soldering. Your solder joints should look like shiny little Hershey's Kisses when finished.
- Socket anything you might want to change, or anything that would be very difficult to remove if faulty (IC's/transistors).

RESOURCES:

Parts Ordering:	Website:	Specialties:
Tayda Electronics	taydaelectronics.com	resistors, capacitors, diodes, sockets, LEDs, pots, knobs
Mouser	mouser.com	resistors, capacitors, IC's
Love My Switches	lovemyswitches.com	switches, knobs, enclosures, pre-wired LEDs



PEDAL BUILDER'S VECTOR PACK
Plan, design, test-fit, & print your DIY pedals with ease!
Visit ontheroadeffects.com



HATE WIRING STOMPSWITCHES?
Stock up on our handy 3PDT wiring boards!
Visit ontheroadeffects.com